

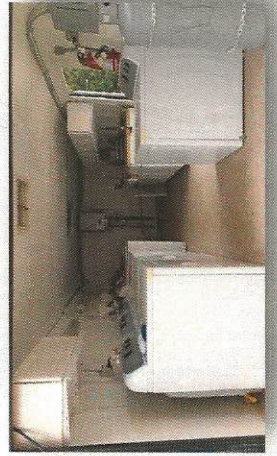
## Services Available

- Mass Feeding
- Disaster Assistance Center
- Assessment
- Clean Up/Recovery
  - Mud-Out
  - Ash-Out
  - Mold Mitigation
  - Temporary Roofing
- Shower/Laundry
- Chaplaincy
- Incident Command

*All services are provided free by trained, background checked, credentialed volunteers*



Shower/Laundry Unit



303-763-0288  
970-342-9218

## Colorado Baptist Disaster Relief

7393 S Alton way  
Centennial, CO 80112  
720.372.7302  
[www.ColoradoDR.org](http://www.ColoradoDR.org)

**Dennis Belz**  
State Director  
720-438-9312  
[dbelz@coloradobaptists.org](mailto:dbelz@coloradobaptists.org)

*To donate, make checks payable to Colorado Baptist Disaster Relief then send to the address above*



## PARTNERS



**Bringing:**

**Help, Hope**

**and Healing**

*(303) 763-0288  
(970) 825-9394*

# Our Objective

To serve others in the name of Jesus Christ by meeting the physical and spiritual needs of individuals and communities suffering in times of disaster.



## From our State Director:

*Colorado Baptist Disaster Relief (CBDR)* is a National Disaster Organization with the *Southern Baptist Disaster Relief (SBDR)* which is based locally in Colorado. Our combined 42 state organizations have over 65,000 volunteers. These volunteers have been trained in disaster relief responding to floods, hurricanes, tornadoes, fires, earthquakes and many other types of disasters both domestically and abroad. All of our CBDR/SBDR volunteers are trained, credentialed, and background checked. These volunteers are prepared to deploy in **BRINGING: Help, Hope and Healing** to those that have been affected by disasters.

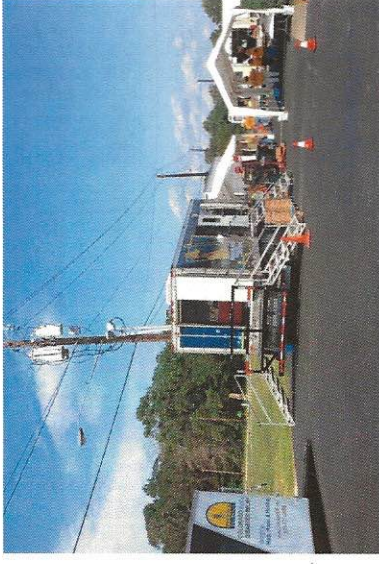
Serving Together,  
Dennis Belz  
Isaiah 52:7



# How We Can Help You

## Mass Feeding

Prepare/Provide meals



## Disaster Assistance Center

The affected can seek help in the recovery process

## Shower and Laundry

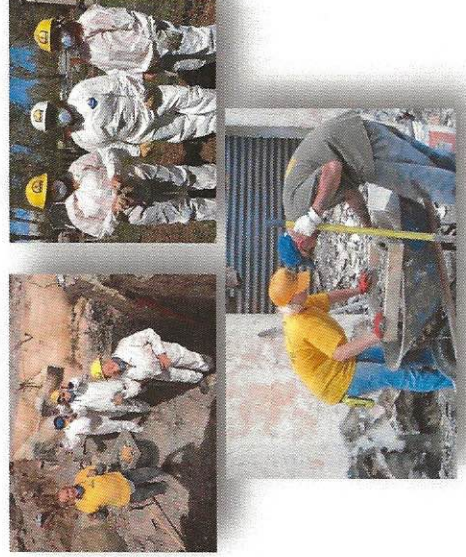
Provide showers and laundry

## Mud Out

Debris removal as a result of floods

## Ash Out

Sifting ash and debris removal from fire



## Assessments

Evaluate damage and clean-up needed

## Mold Mitigation

Remove mold, clean and spray with Shockwave



## Chaplaincy

Provide emotional and spiritual care.

